

2025 annual report to the Community

Robe Soldiers Memorial Kindergarten

Robe Soldiers Memorial Kindergarten number: 6543

Partnership: South East Coast & Vines



Preschool director:

Sally Smith

Signature

Date of endorsement:

17/02/2026



Government
of South Australia
Department for Education

Context Statement

Information about Robe Soldiers Memorial Kindergarten is available on the centres website, as well as the Australian Childrens Education and Care Quality Authority (ACECQA) website.

Governing Council Report

2025 has been another great year at Robe Kindergarten. We started with 15 children, welcomed 9 more in Term 3, and celebrated 5 heading off to school mid-year. It's been a busy, happy group with lots of growth and learning.

Beach Kindy continued to be a highlight, giving the children plenty of chances to explore our beautiful coastline. Our fundraising efforts also went well, with \$1,085 raised at the Bridge Club Tournament and \$1,236.45 from the September Pub Raffle — thank you to everyone who helped make these events a success.

Although we didn't continue with the Song Room program, Brogan has done an amazing job leading our music program and also stepped into the Acting Director role during the year. We're very grateful for her hard work and leadership.

This year we also supported Georgie in taking on the Playgroup Coordinator role, with mentoring from Angela Braithwaite. It's been great to see playgroup attendance and engagement grow as a result. Our partnership with the CCOWS mobile childcare service has strengthened too, thanks to new manager Chelsea Betheras and her collaborative approach.

A huge thank you to our wonderful educators — Sally, Brogan, Georgie, Amanda and Sammy — for everything you do. Your dedication and care make kindy such a special place.

We look forward to welcoming new families in 2026 and enjoying another year of learning and connection

Preschool Attendance

	Term 1	Term 3
2022 centre	91.3%	61.9%
2023 centre	89.1%	89.8%
2024 centre	89.5%	86.7%
2025 centre	95.5%	91.4%

Based on preschool sessions attended during a two-week reference period in Term 1 and Term 3. The table represents the proportion of hours attended out of total hours enrolled (booked). Data Source: Department for Education attendance data.

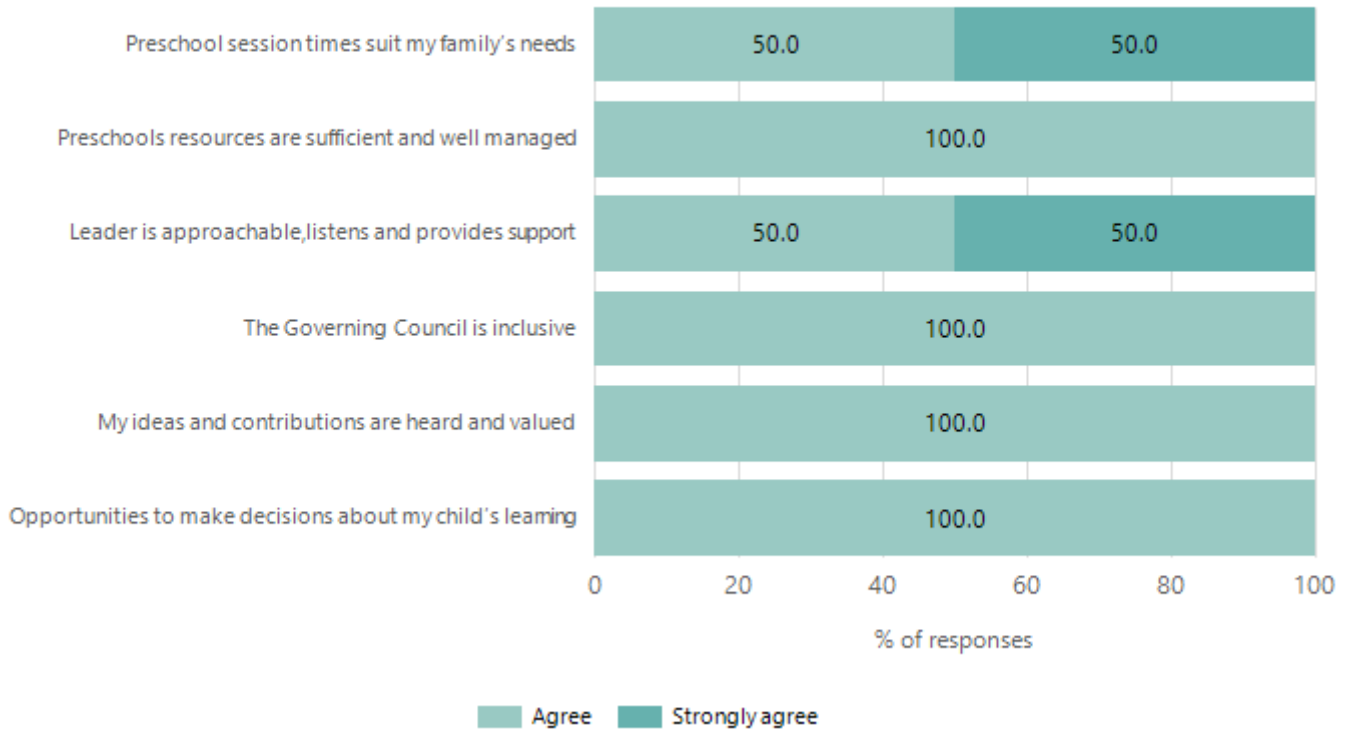
Attendance Comment

In South Australia, preschool attendance is not compulsory, but it is strongly encouraged. Preschool gives children the best opportunity to develop skills, which prepare them for school. These benefits include establishing positive routines and habits, friendships and connections as well as developing communication, problem-solving and creative skills.

Our attendance is tracking extremely well improving from last year and up above 90%. Very pleasing.

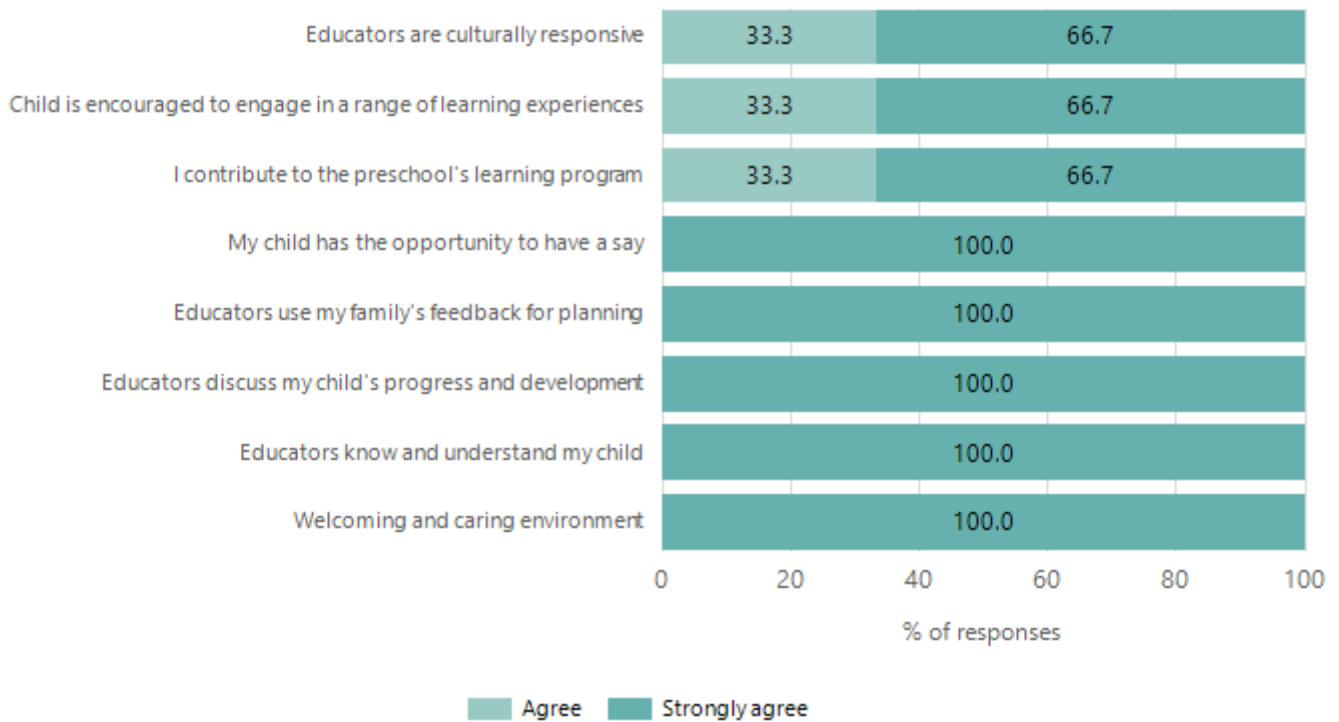
Preschool Family Opinion Survey

Governance, Leadership and Management



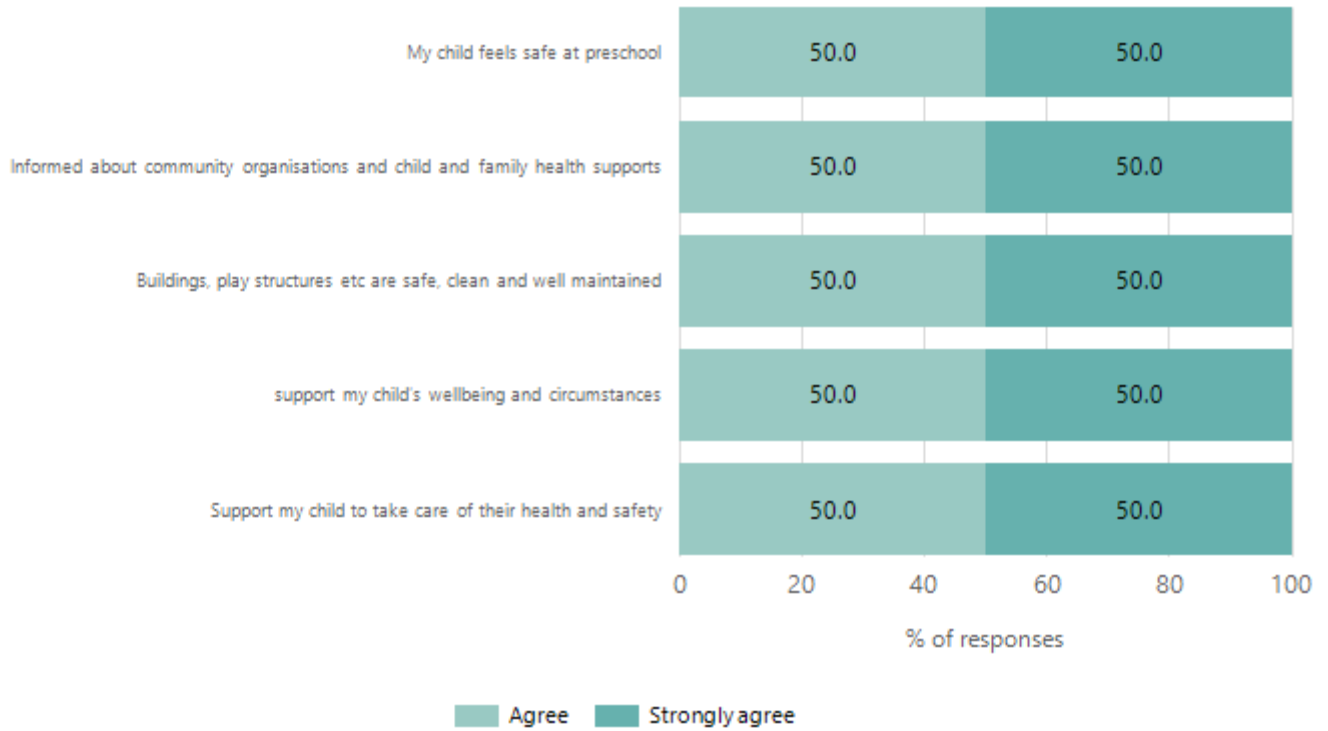
Data Source: 2025 Department for Education Preschool Family Opinions Survey, Term 3 2025.

Quality of Teaching and Learning



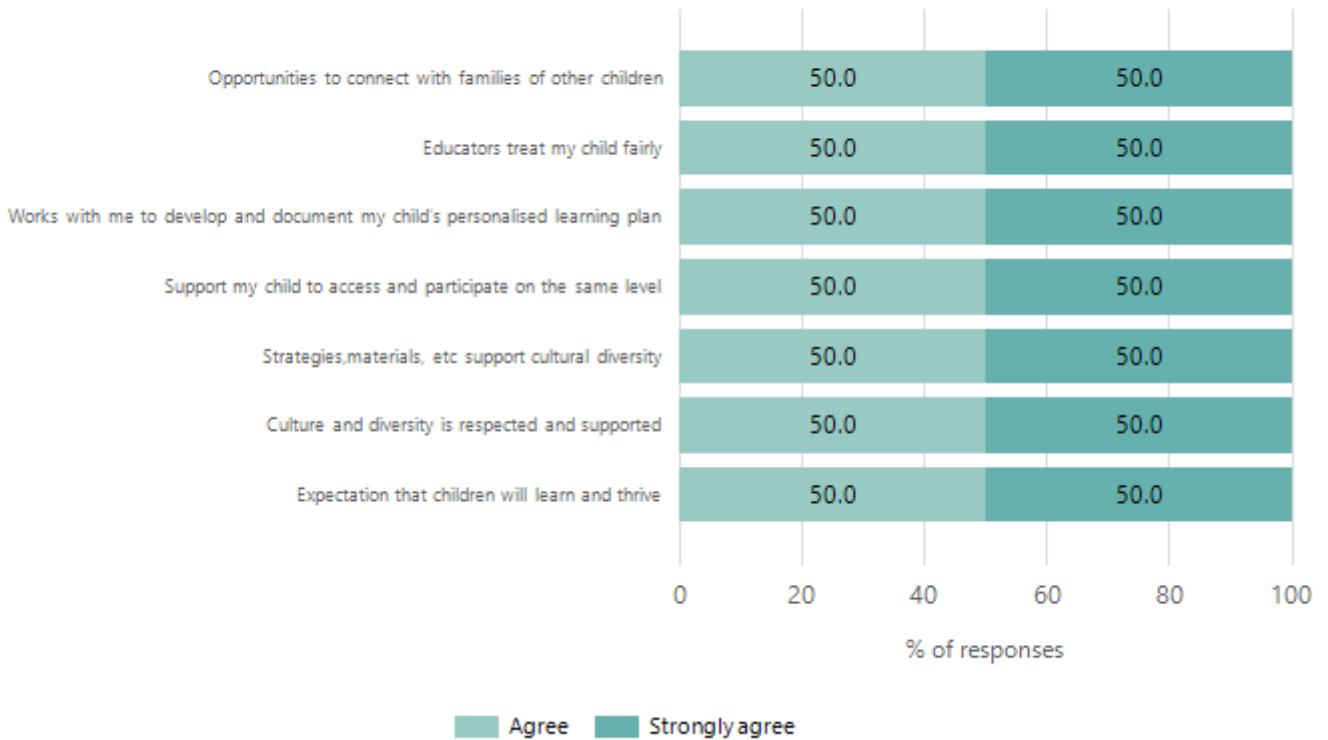
Data Source: 2025 Department for Education Preschool Family Opinions Survey, Term 3 2025.

Safety, Health and Wellbeing



Data Source: 2025 Department for Education Preschool Family Opinions Survey, Term 3 2025.

Support and Inclusion



Data Source: 2025 Department for Education Preschool Family Opinions Survey, Term 3 2025.

Destination Schools

Feeder Schools (Site number - Name)	2023	2024	2025
0384 - Robe Primary School	86.4%	66.7%	40.9%
0737 - Kingston Community School		4.2%	
9999 - Unknown	13.6%	29.2%	59.1%

Note: The data is collected in term 3. It does not reflect actual schools enrolled in by existing preschool children. A blank cell indicates there was no data for students enrolled.

Data Source: Department for Education Destination Data Report, 2025.

Highest Qualifications held by the teaching workforce and workforce composition

All teachers at this school are qualified and registered with the SA Teachers Registration Board.

Qualification Level	Number of Qualifications
Bachelor's degrees or Diplomas	1

Data Source: Data extracted from Mandatory Workforce Information Collections as on the last pay date of June 2025. As self-reported by staff in the system.

Please note: Data includes staff who are Actively employed and on extended paid leave. Please note only the highest qualification of the Teaching staff is reported. Excludes any number of other certifications earned.

Workforce composition including indigenous staff

	Teaching Staff		Non-Teaching Staff	
	Indigenous	Non-Indigenous	Indigenous	Non-Indigenous
Full-Time Equivalents	0.0	0.6	0.1	0.7
Persons	0.0	1.0	1.0	1.0

Data Source: Data extracted from Mandatory Workforce Information Collection as on the last pay date of June 2025.

Please note: Data includes staff who are actively employed and on extended paid leave. "Indigenous category" is self-reported by staff in the system.

Financial Statement

Source	Amount
Grants: State	\$0
Grants: Commonwealth	\$0
Parent Contributions	\$6600
Fund Raising	\$2321
Other	\$110

Data Source: School supplied data.